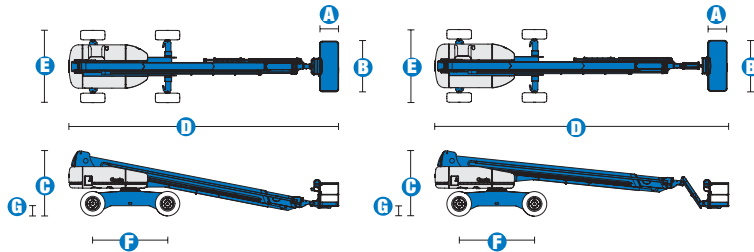


# Specifications



MODELS	S™-105		S™-125	
MEASUREMENTS	Metric	US	Metric	US
Working height maximum*	34 m	111 ft	40.15 m	131 ft 2 in
Platform height maximum	32 m	105 f	38.15 m	125 ft 2 in
Horizontal reach maximum	24.38 m	80 ft	24.38 m	80 ft
Below ground reach	3.05 m	10 ft	3.27 m	10 ft 9 in
<b>A</b> Platform length - 8 ft model	91 cm	3 ft	91 cm	3 ft
Platform length - 6 ft model	76 cm	2 ft 6 in	76 cm	2 ft 6 in
<b>B</b> Platform width - 8 ft model	2.44 m	8 ft	2.44 m	8 ft
Platform width - 6 ft model	1.83 m	6 ft	1.83 m	6 ft
<b>C</b> Height - stowed	3.07 m	10 ft 1 in	3.07 m	10 ft 1 in
<b>D</b> Length - stowed	14.02 m	46 ft	14.25 m	46 ft 9 in
Length - transport (jib tucked under)	12.17 m	39 ft 11 in	12.17 m	39 ft 11 in
<b>E</b> Width - axles retracted	2.49 m	8 ft 2 in	2.49 m	8 ft 2 in
Width - axles extended	3.35 m	11 ft	3.35 m	11 ft
<b>F</b> Wheelbase	3.66 m	12 ft	3.66 m	12 ft
<b>G</b> Ground clearance - centre	44 cm	1 ft 5.5 in	44 cm	1 ft 5.5 in

PRODUCTIVITY				
Lift capacity	227 kg	500 lbs	227 kg	500 lbs
Platform rotation	160°	160°	160°	160°
Vertical jib rotation	135° (+78°/-57°)	135°	135° (+78°/-57°)	135°
Turntable rotation	360° continuous		360° continuous	
Turntable tailswing - axle retracted	1.68 m	5 ft 6 in	1.68 m	5 ft 6 in
Turntable tailswing - axle extended	1.22 m	4 ft	1.24 m	4 ft 1 in
Drive speed - stowed	4.8 km/h	3.0 mph	4.8 km/h	3.0 mph
Drive speed - raised/extended				
below 24.23 m (80 ft)	1.1 km/h	0.68 mph	1.1 km/h	0.68 mph
Drive speed - raised/extended				
above 24.23 m (80 ft)	0.55 km/h	0.34 mph	0.55 km/h	0.34 mph
Gradeability - stowed**	40%	40%	40%	40%
Turning radius - axle retracted: inside	4.14 m	13 ft 7 in	4.01 m	13 ft 2 in
outside	6.58 m	21 ft 7 in	6.75 m	22 ft 2 in
Turning radius - axle extended: inside	2.74 m	9 ft	2.59 m	8 ft 6 in
outside	6.05 m	19 ft 10 in	5.74 m	18 ft 10 in
Controls	12 V DC proportional		12 V DC proportional	
Tyres - RT lug	385/65D 22.5		445/65 D22.5	

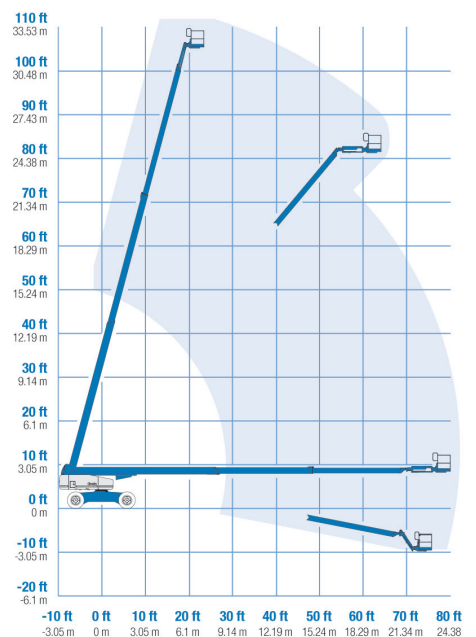
POWER				
Power source	Deutz TD2011 L04i 4 cylinder turbo diesel 74 hp (55 kW) Perkins 804-33T 4 cylinder turbo diesel 83 hp (62 kW)			
Auxiliary power unit	12 V DC	12 V DC	12 V DC	12 V DC
Hydraulic tank capacity	208 L	55 gal	208 L	55 gal
Fuel tank capacity	151 L	40 gal	151 L	40 gal

SOUND & VIBRATION LEVELS				
Sound pressure level (ground workstation)	83 dBA	83 dBA	83 dBA	83 dBA
Sound pressure level (platform workstation)	71 dBA	71 dBA	71 dBA	71 dBA
Vibration	<2.5 m/s <sup>2</sup>	<8 ft 2 in/s <sup>2</sup>	<2.5 m/s <sup>2</sup>	<8 ft 2 in/s <sup>2</sup>

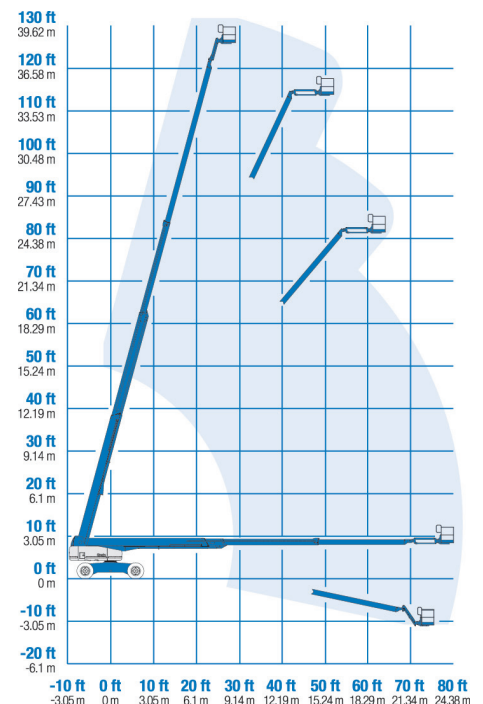
WEIGHT***				
	18,144 kg	40,000 lbs	20,248 kg	44,640 lbs

STANDARDS COMPLIANCE	
	CE EN280, PB-10-611-03

## RANGE OF MOTION S™-105



## RANGE OF MOTION S™-125



\* The metric equivalent of working height adds 2 m to platform height. U.S. adds 6 ft to platform height.  
\*\* Gradeability applies to driving on slopes. See Operator's Manual for details regarding slope ratings.  
\*\*\* Weight will vary depending on options and/or country standards.

## Features

### EASILY CONFIGURED TO MEET YOUR NEEDS

#### PLATFORM OPTIONS

- Steel 2.44 m (8 ft) (standard)
- Steel 1.83 m (6 ft)
- Steel 2.44 m (8 ft) tri-entry

#### JIB OPTIONS

- Non-jib
- 1.52 m (5 ft) jib boom

#### POWER

- Deutz diesel 74 hp (55 kW)
- Perkins diesel 83 hp (62 kW)

#### DRIVE/STEER OPTIONS

- 4x4 (standard)
- 4 wheel steer (standard)

#### AXLE

- Extendable axles (standard)

#### TYRE

- Rough terrain foam-filled (standard)

### STANDARD FEATURES

#### MEASUREMENTS

##### S™-105

- 34 m (111 ft) working height
- 24.38 m (80 ft) horizontal reach
- 227 kg (500 lb) lift capacity

##### S™-125

- 40.15 m (131 ft 2 in) working height
- 24.38 m (80 ft) horizontal reach
- 227 kg (500 lb) lift capacity

#### PRODUCTIVITY

- Self-levelling platform
- Hydraulic platform rotation
- Fully proportional Hall effect joystick controls
- Hydraulic oil cooler
- Thumb rocker steer
- Drive enable
- AC power to platform
- Horn
- Tilt alarm
- Descent alarm
- Alarm package (flashing beacon/travel alarm)
- 360° continuous turntable rotation
- Locking turntable covers
- Positive traction drive
- Two speed wheel motors
- Configurable controls to limit max. height to 24.38 m (80 ft) & to 30.48 m (100 ft) S™-125
- Ground control box cover
- Lockable platform control box cover
- Engine status display
- Two platform work lights
- Two chassis work lights
- Certified load sensor

#### POWER

- 12 V DC auxiliary power
- Anti-restart engine protection
- Auto engine fault shutdown
- Intake air heater (Deutz diesel only)



### OPTIONS & ACCESSORIES

#### PRODUCTIVITY

- Platform swing gate
- Half mesh platform inserts with swing gate
- Platform top auxiliary rail
- Weld leads to platform
- Air line to platform
- Power to platform (incl. plug, socket/ground fault interrupt earth leakage on request)
- Dual axis joystick steering
- Hostile environment kit
- Deluxe hostile environment kit
- Tool tray
- Fluorescent tube caddy\*

#### POWER

- Diesel catalytic scrubber muffler
- Diesel intake air pre-cleaner

\* Available on tri-entry basket model only

#### Enquiries from Europe:

Tel: +31 165 519 361

Fax: +31 165 511 148

Email: AWP-InfoEurope@terex.com

#### Offices:

##### France

Tel: +33 (0)2 37 26 09 99

Fax: +33 (0)2 37 26 09 98

##### Germany

Tel: +49 (0)4221 491 810

Fax: +49 (0)4221 491 820

##### Spain

Tel: +34 93 572 50 90

Fax: +34 93 572 50 91

##### Scandinavia

Tel: +46 31 57 51 00

Fax: +46 31 57 51 04

##### The Netherlands

Tel: +31 165 519 361

Fax: +31 165 511 148

#### UK

The Maltings

Wharf Road

Grantham NG31 6BH

UK

Tel: +44 (0)1476 584333

Fax: +44 (0)1476 584334

#### Middle East

Tel: +971 4 399 0381

Fax: +971 4 399 0382

Email: AWP.Infome@terex.com

#### Russia & CIS countries

Tel: +7 495 660 32 30

Fax: +7 495 660 32 29

Email: info@terexrus.ru

#### Corporate Headquarters:

##### United States

18340 NE 76th Street

P.O. Box 97030

Redmond, WA

USA 98073-9730

Tel: +1 425 881-1800

Fax: +1 425 883-3475

#### Distributed By: